

vcloudpoint



**vMatrix Classroom Control
Installation Manual**

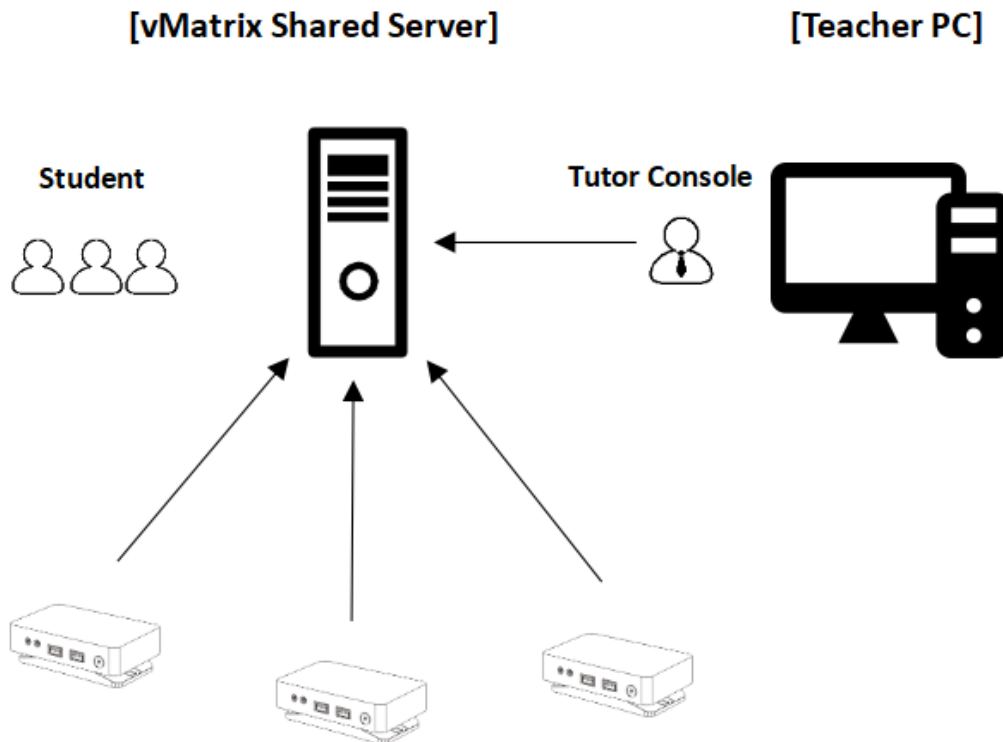
Content

Scenario 1: The teacher uses a separate server and students use zero clients.- 2 -

Scenario 2: Students log in the server and the teacher uses the server- 11 -

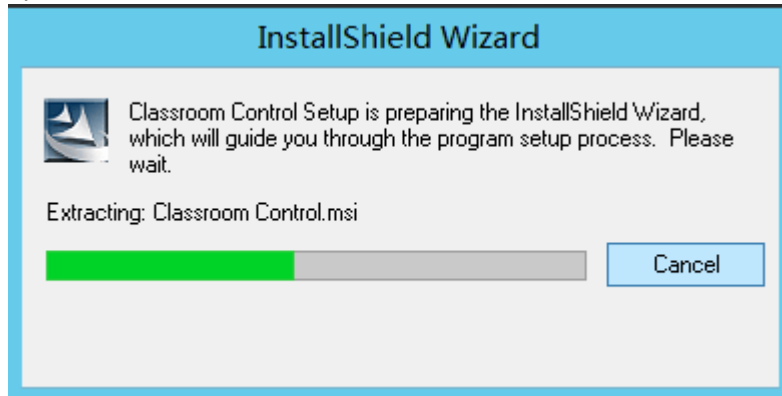
Authorization Code of vMatrix Classroom Control- 18 -

Scenario 1: The teacher uses a separate PC rather than the shared server.

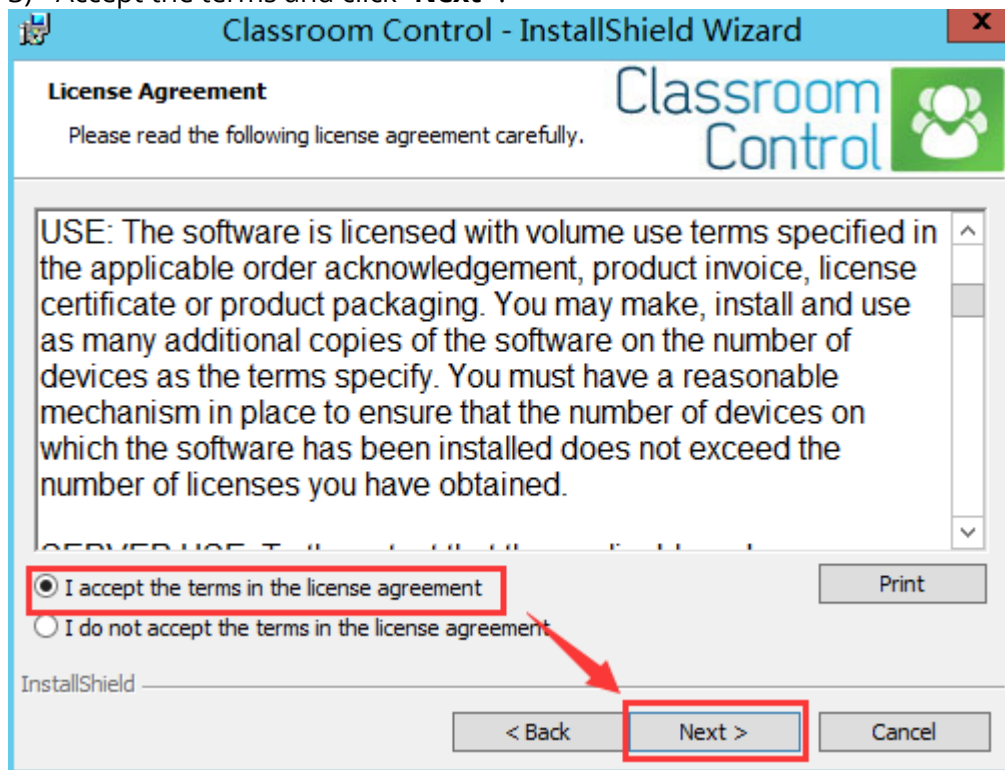


Note: the operating system of the shared server shall be a Windows Server System such as Windows Server 2008R2, 2012R2, or 2016.

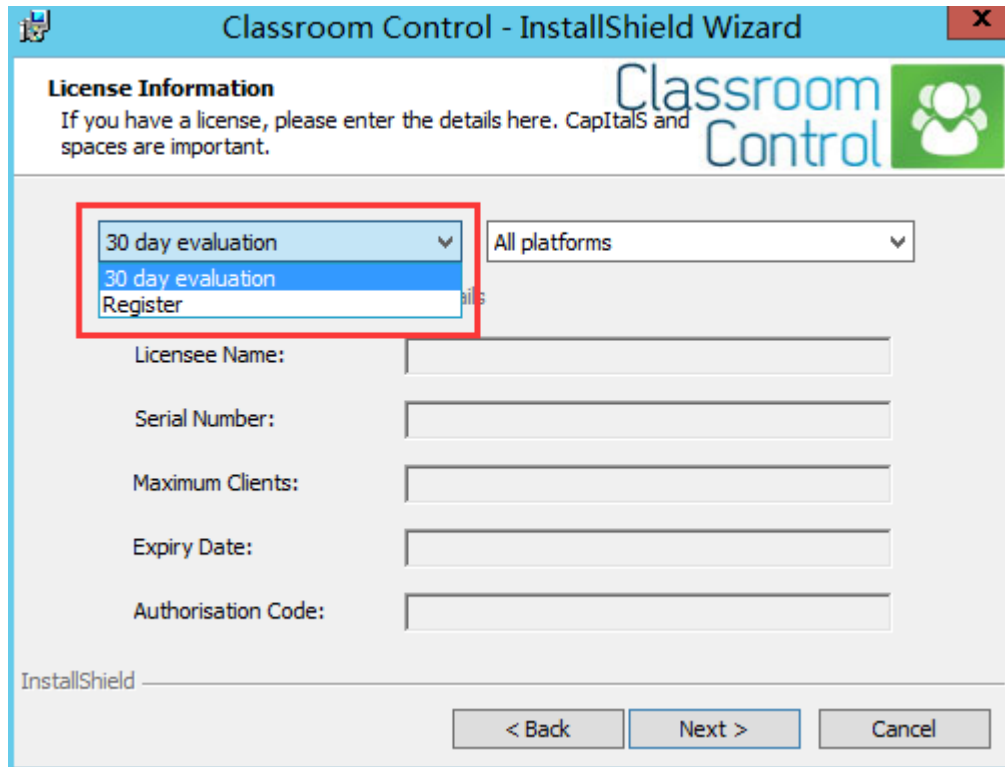
- 1) The latest version of vMatrix Classroom Control is obtainable at <http://www.vcloudpoint.com/support/add-ons/>
- 2) Install vMatrix Classroom Control on the Teacher's PC.



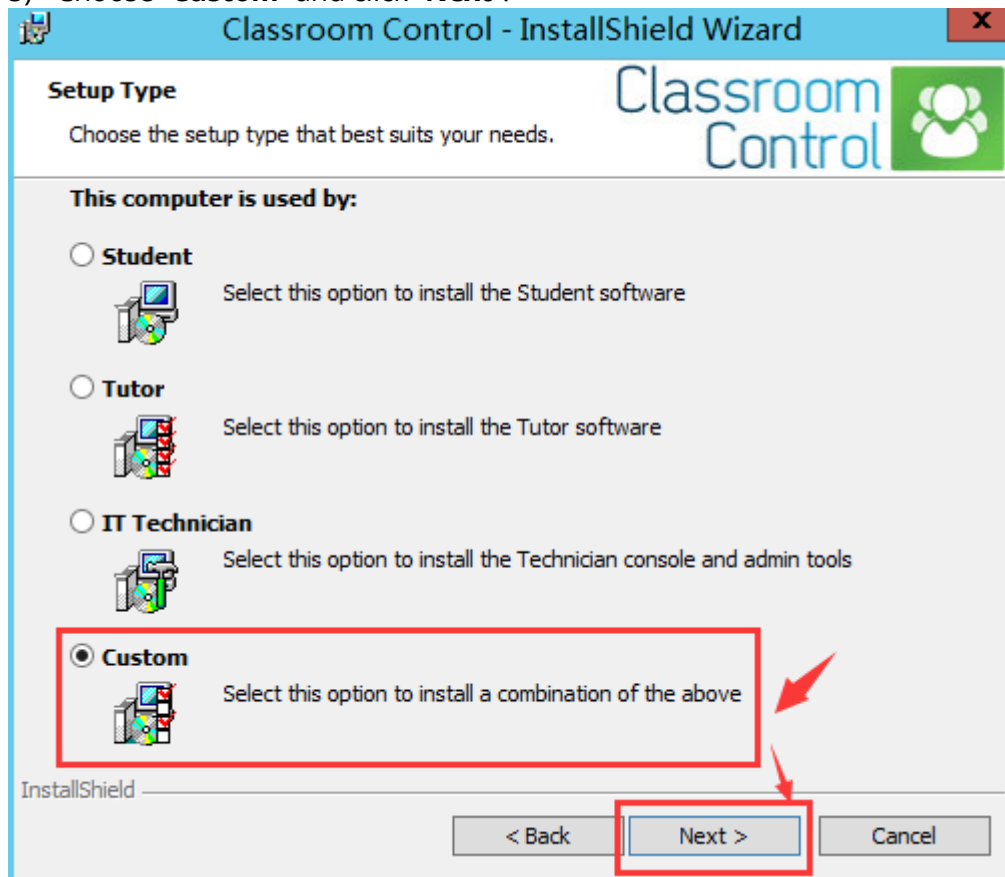
- 3) Accept the terms and click **"Next"**.



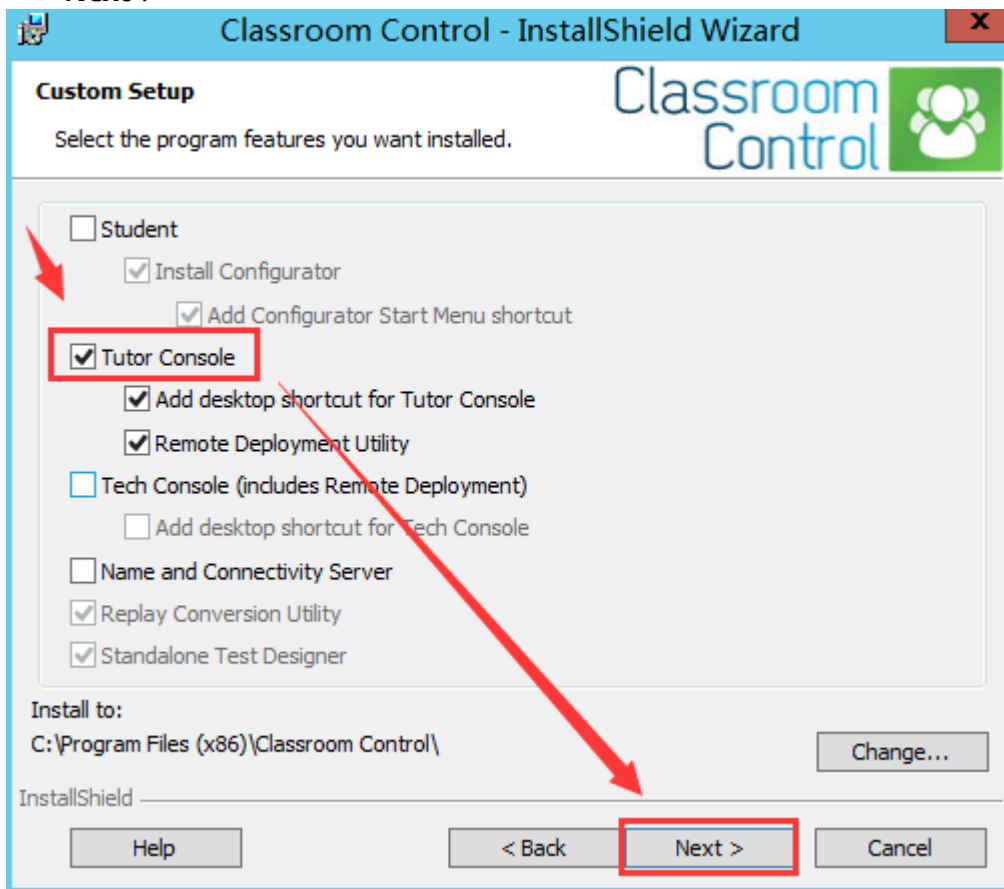
- 4) If you have not purchased an authorization code, you can choose “**30 day evaluation**” and it allows you to control up to 40 users; if you have purchased an authorization code, you can choose “**Register**”, enter the correct authorization code and click “**Next**”.



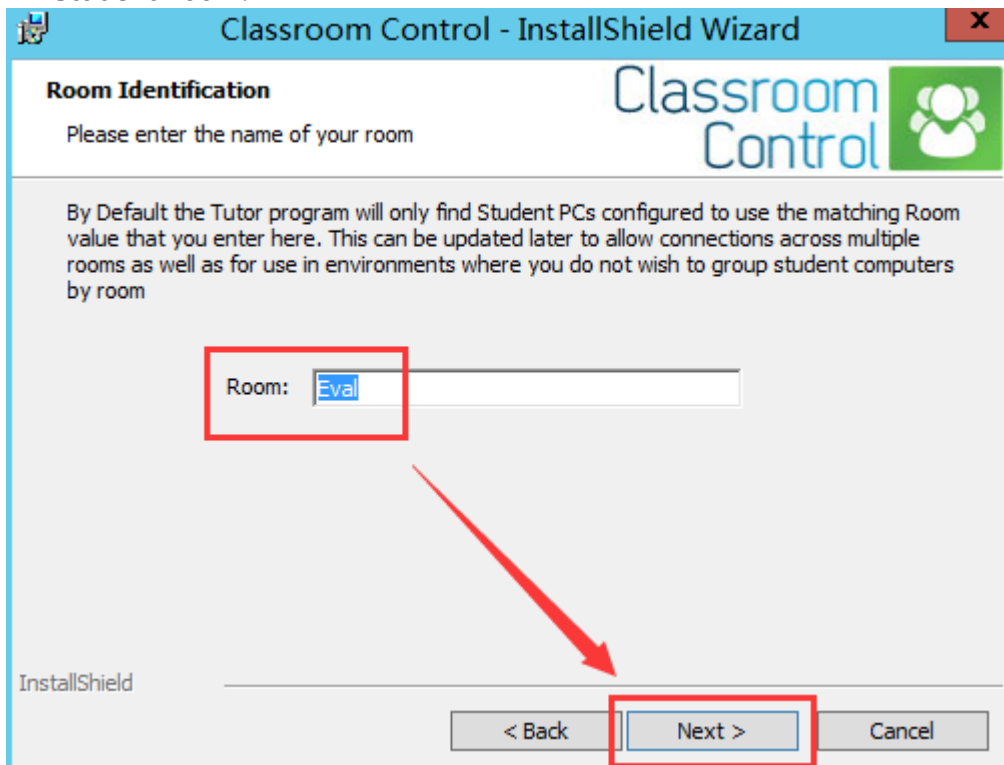
- 5) Choose “**Custom**” and click “**Next**”.



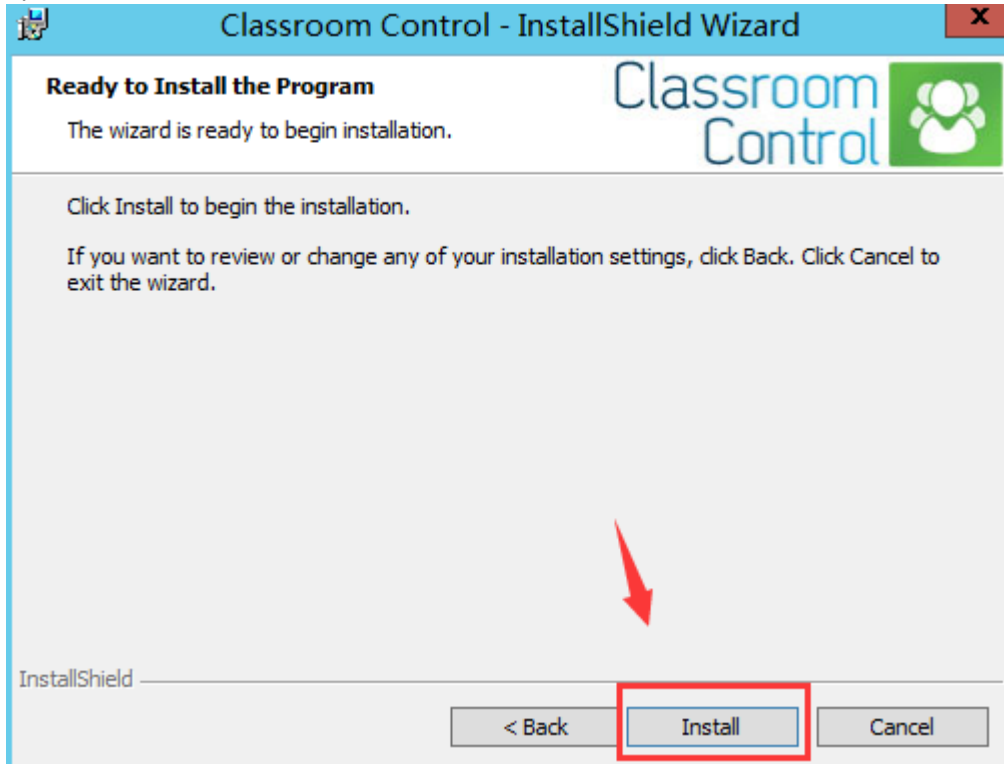
- 6) Check the "Tutor Console" only, keep the installation path default and click "Next".



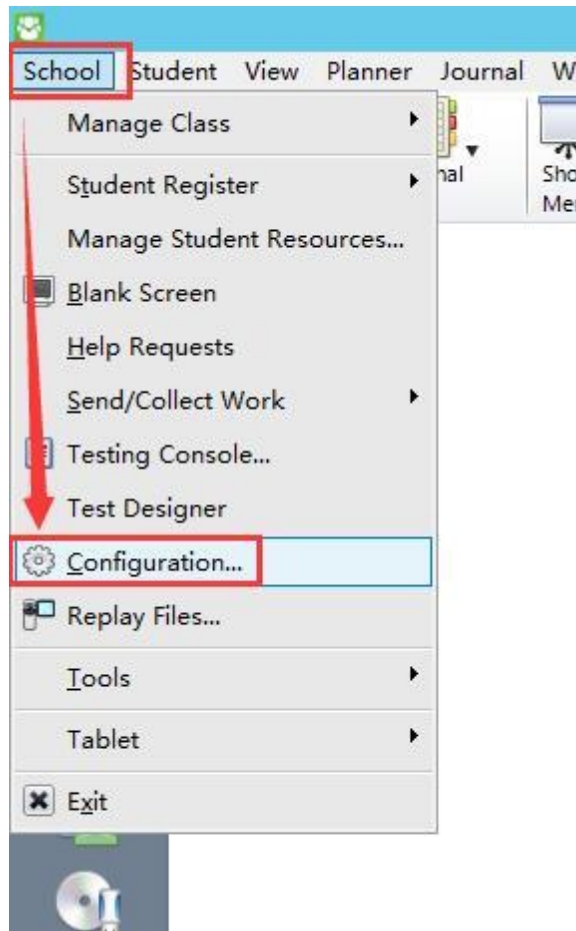
- 7) The default name of the room is **Eval**. You can also rename it and then click "Next". Please ensure the name of the Teacher Room is the same with the Student Room.



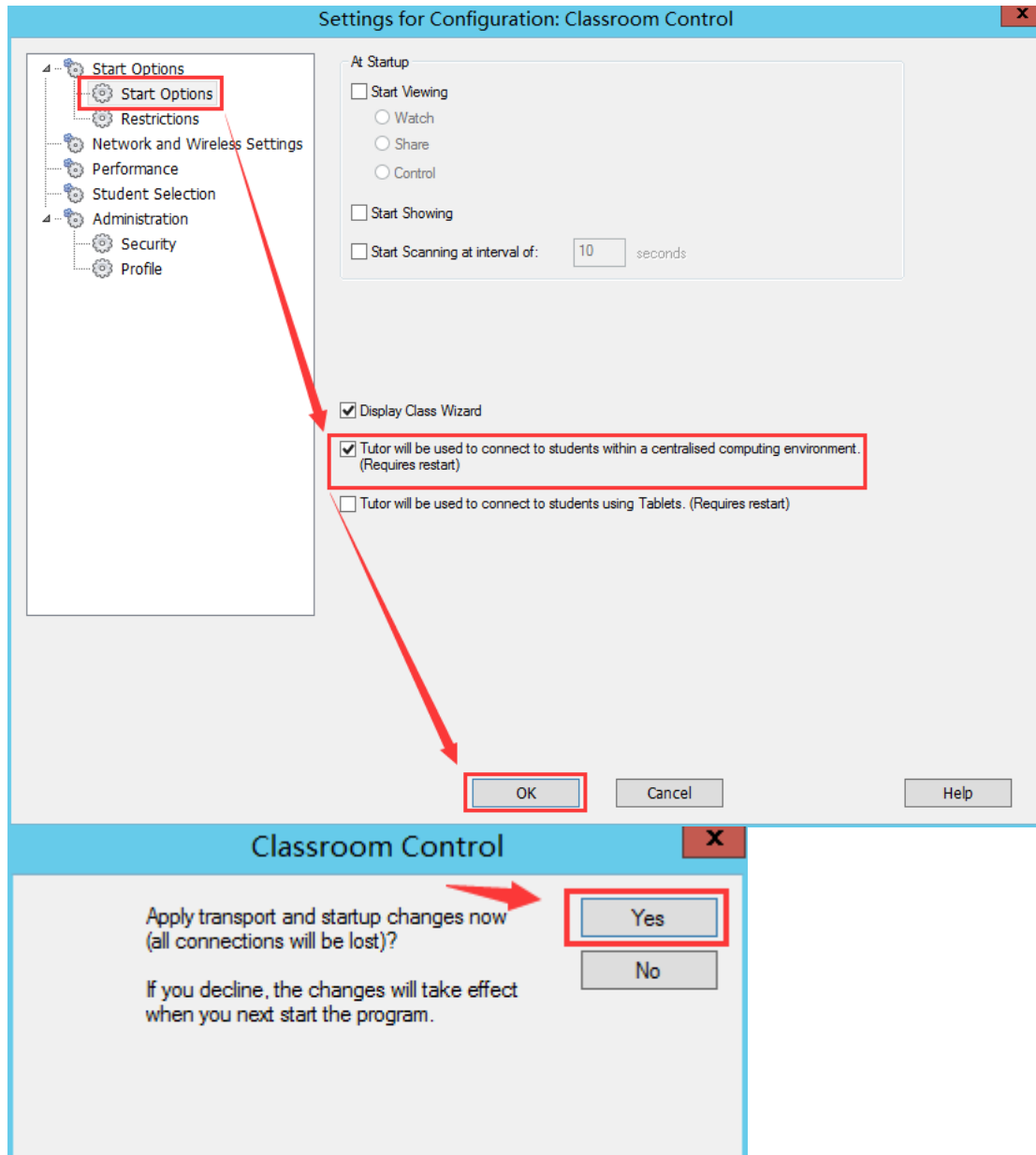
8) Click "Install".



9) After installation, please run **Classroom Control Tutor Console** and select "Configuration...".



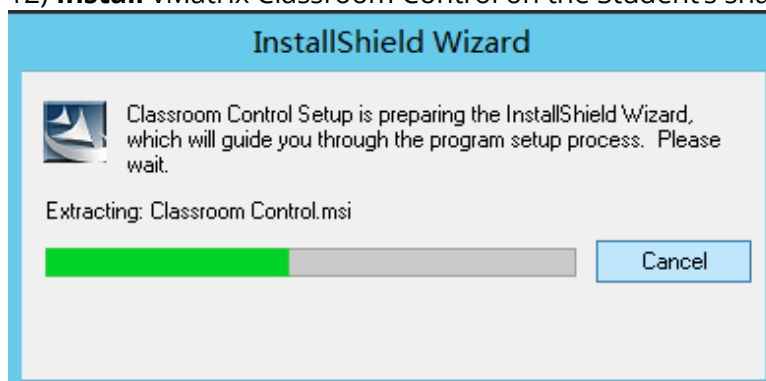
- 10) In the “Startup Options”, check the option “Tutor will be used to connect to students within a centralised computing environment (Required restart)” and click “OK” for restart.



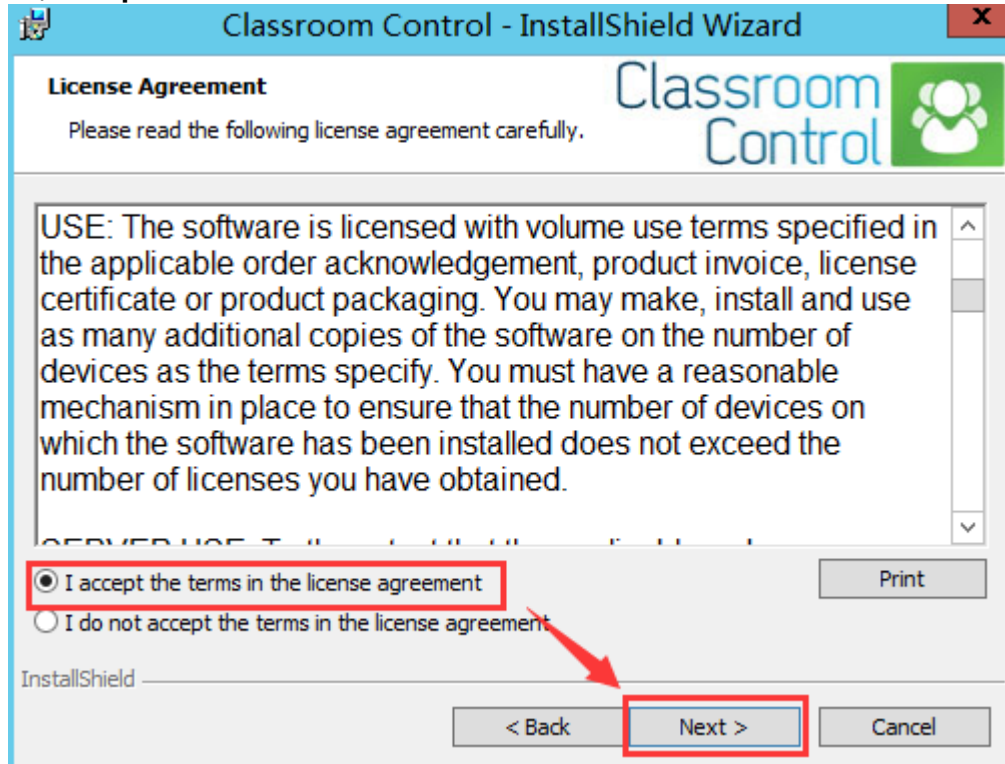
- 11) When installation completes, please restart the server.

.....

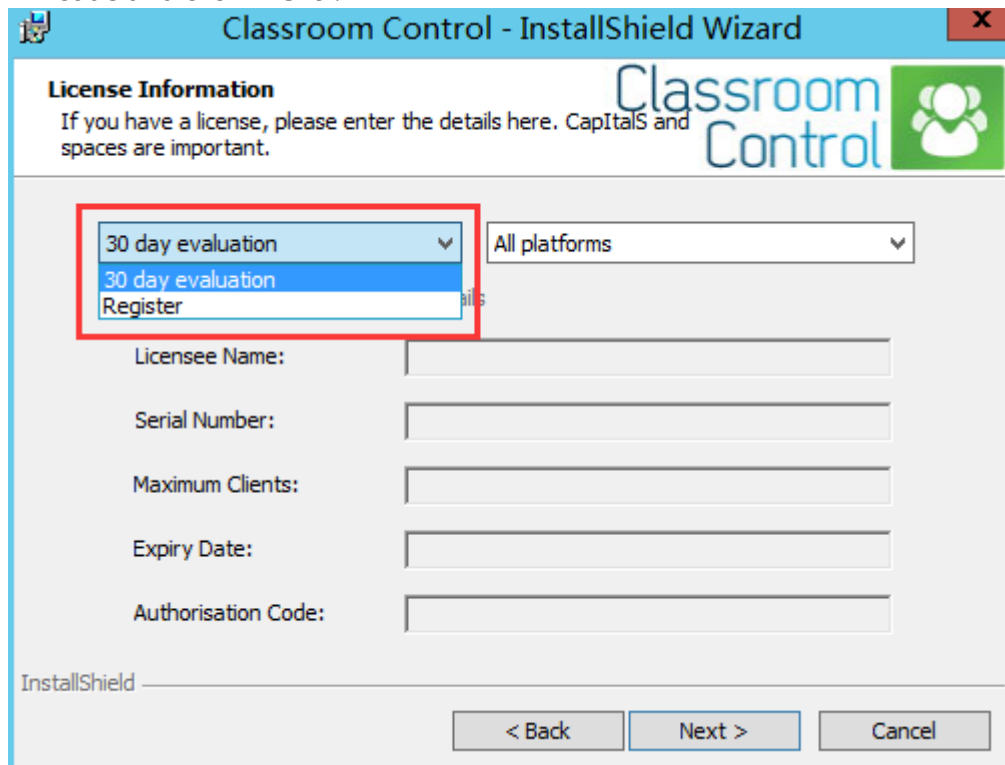
- 12) **Install** vMatrix Classroom Control on the Student's shared server.



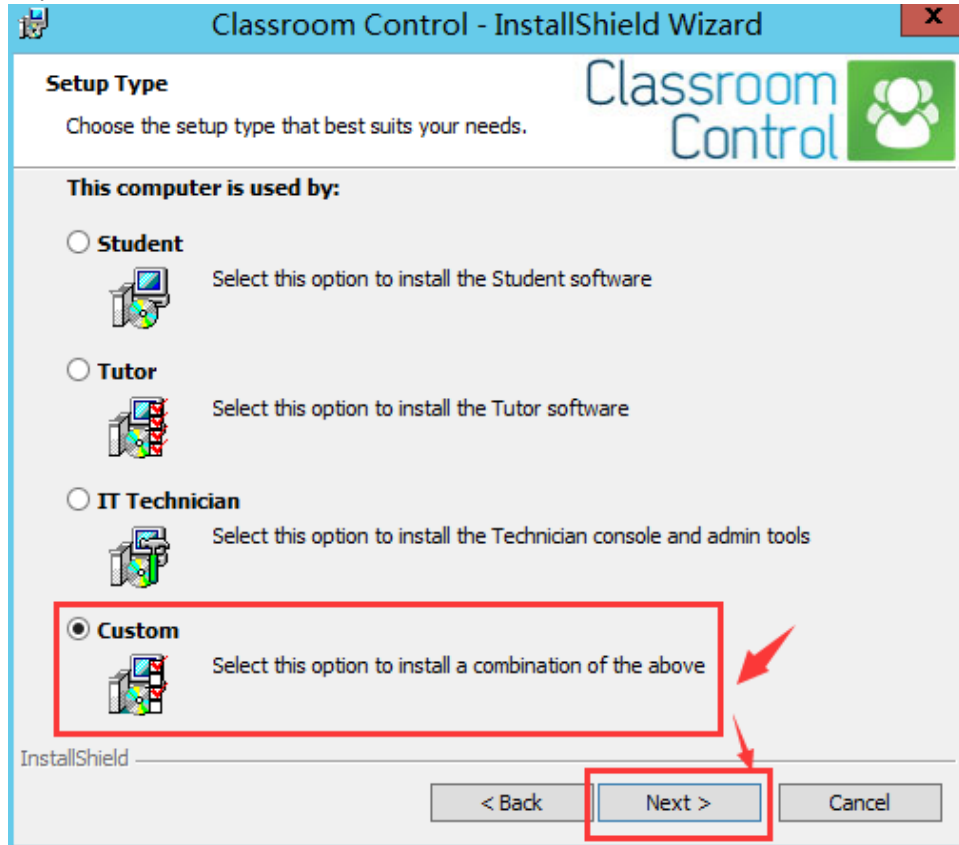
13) **Accept the terms** and click **“Next”**.



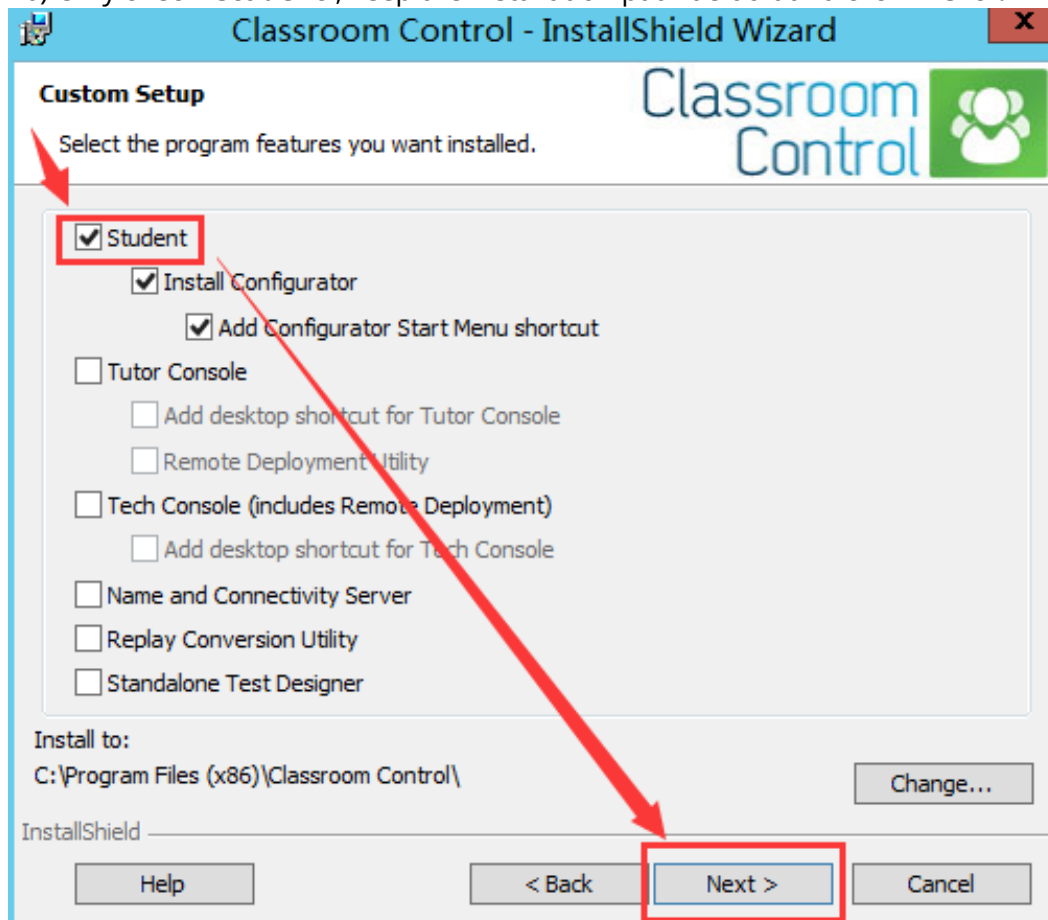
14) If you have not purchased an authorization code, you can choose **“30 day evaluation”** and it allows you to control up to 40 users; if you have purchased an authorization code, you can choose **“Register”**, enter the correct authorization code and click **“Next”**.



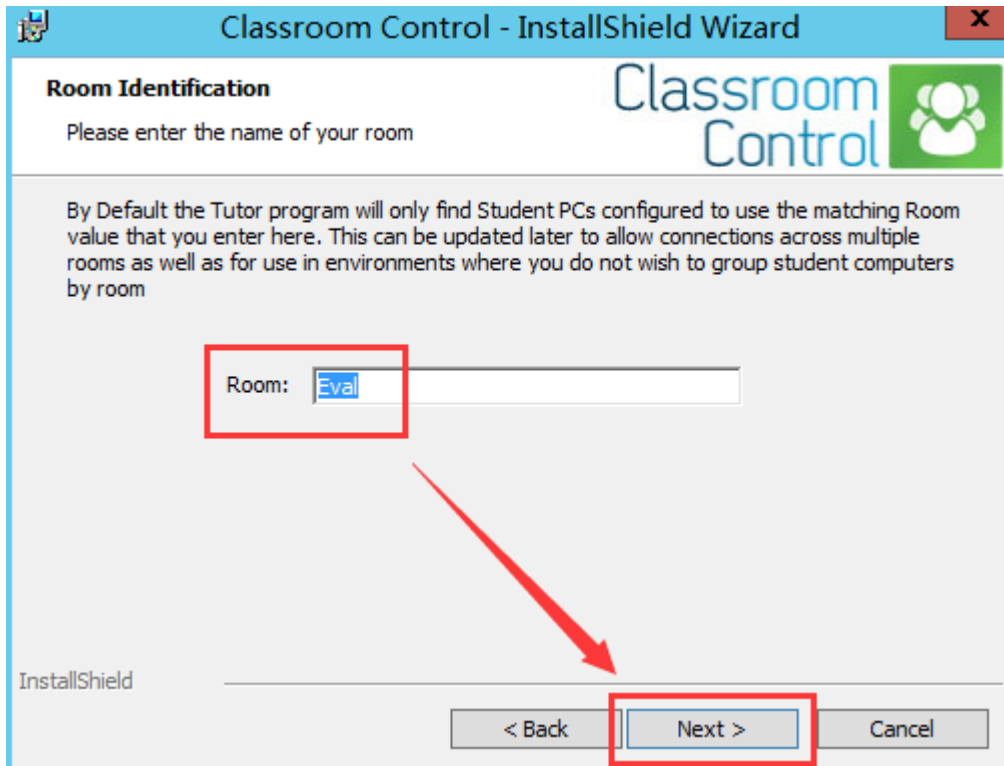
15) Choose **“Custom”** and click **“Next”**.



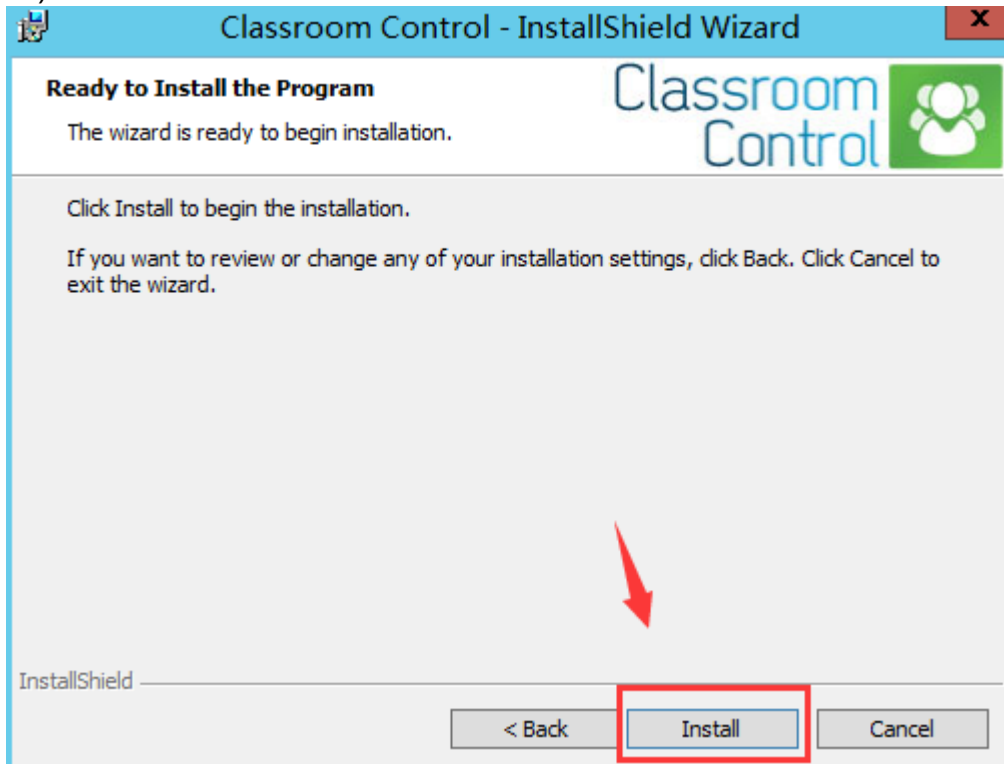
16) Only check **“Student”**, keep the installation path default and click **“Next”**.



17) The default name of the room is **Eval**, you can rename it to be same with the Teacher Room's and then click "**Next**".



18) Click "**Install**".

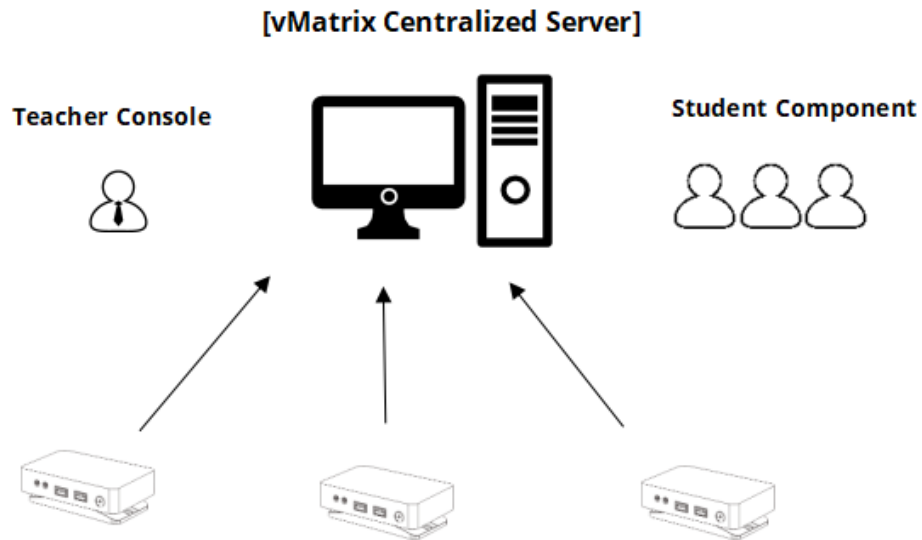


19) When installation completes, please restart the server.

.....

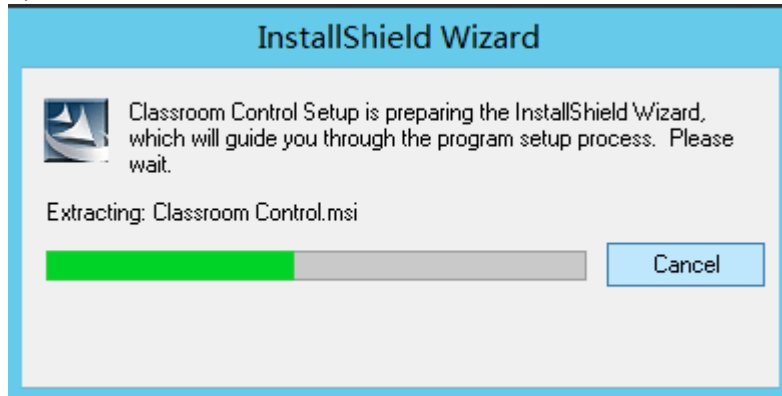
20) After restarting the shared server, you can open the console and select a room to connect the zero clients in the Teacher's PC.

Scenario 2: The teacher uses an administrator account on the shared server.

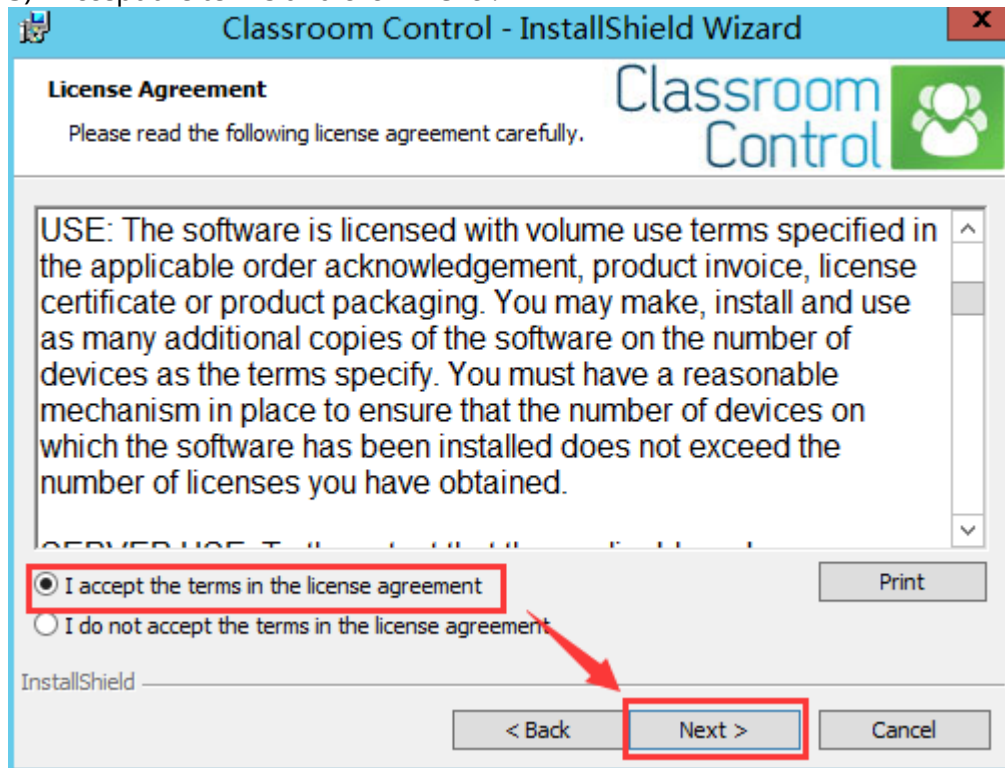


Note: the operating system of the shared server shall be a Windows Server System such as Windows Server 2008R2, 2012R2, or 2016.

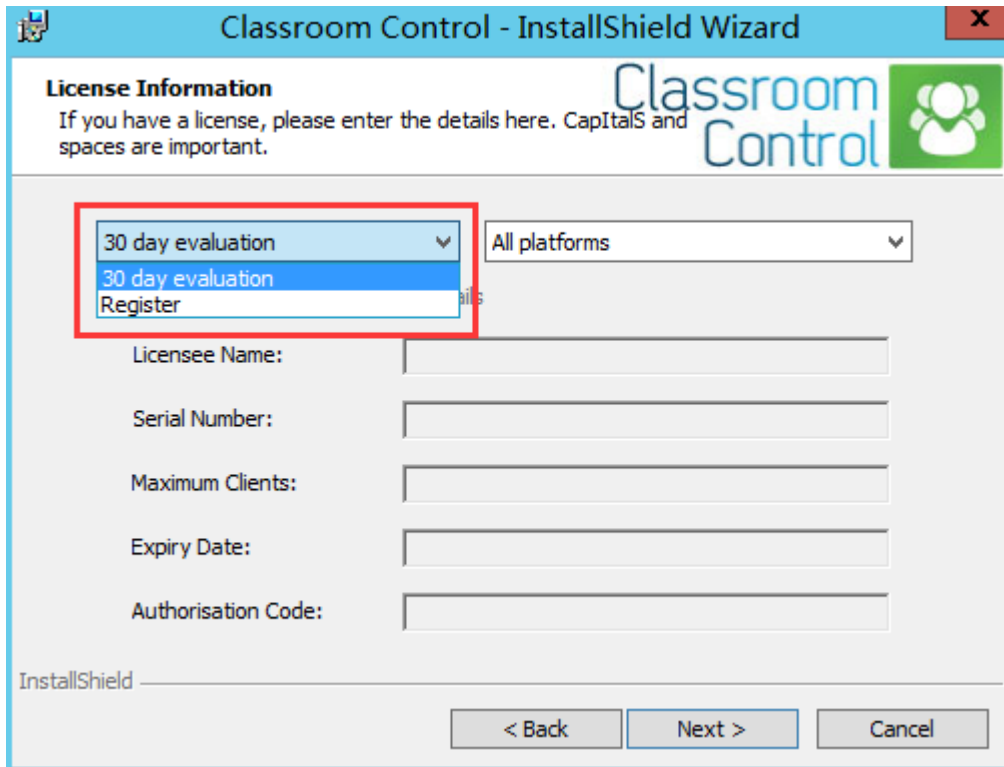
- 1) The latest version of vMatrix Classroom Control is obtainable at <http://www.vcloudpoint.com/support/add-ons/>
- 2) **Install** vMatrix Classroom Control on the shared server.



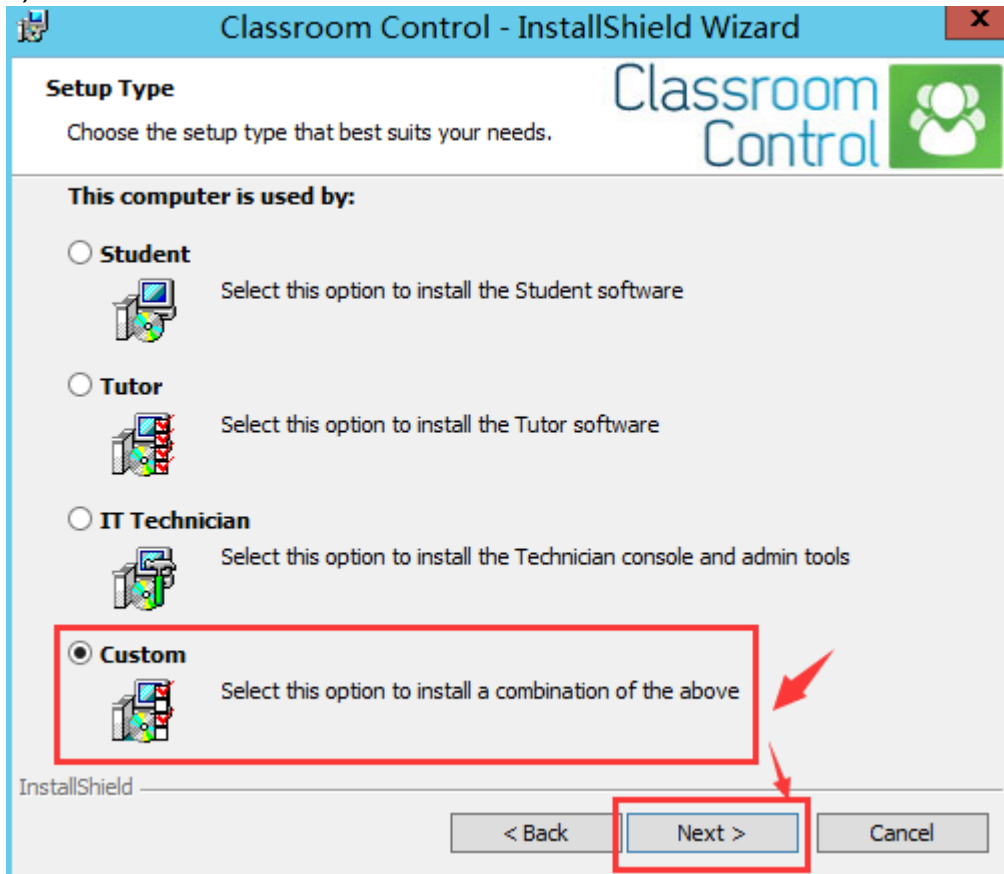
- 3) Accept the terms and click **"Next"**.



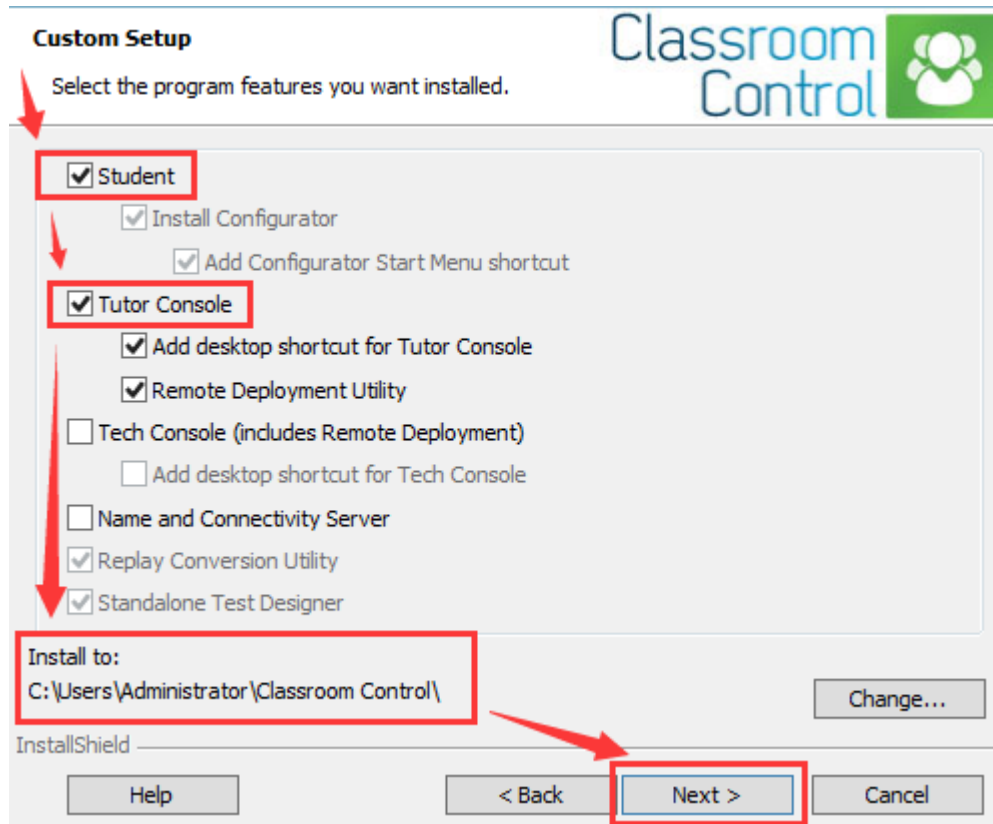
- 4) If you have not purchased an authorization code, you can choose “**30 day evaluation**” and it allows you to control up to 40 users; if you have purchased an authorization code, you can choose “**Register**”, enter the correct authorization code and click “**Next**”.



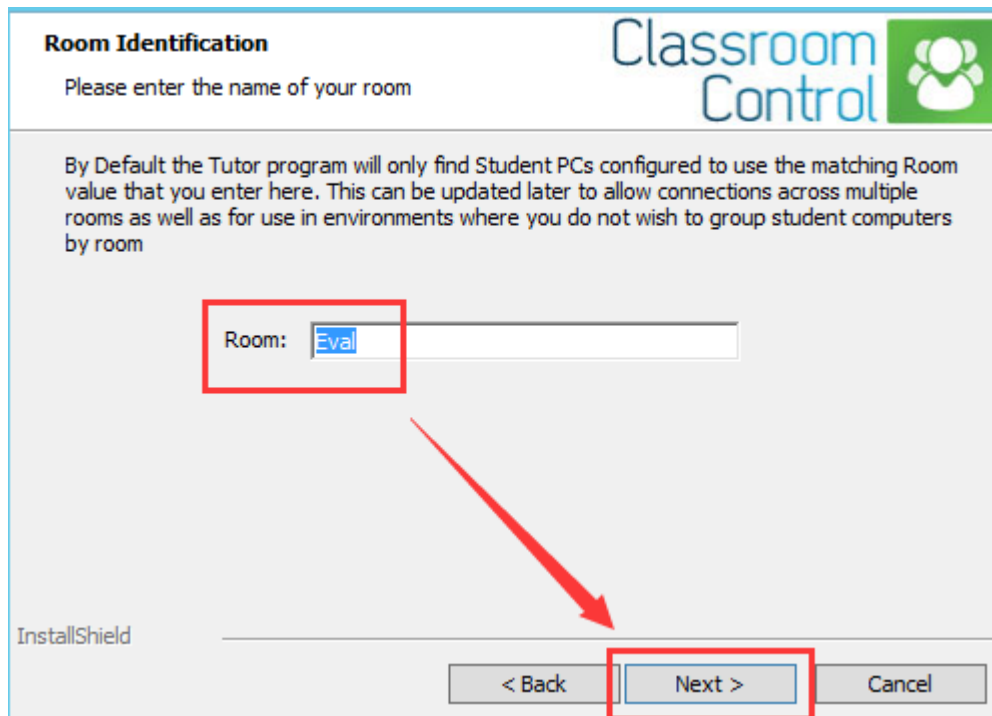
- 5) Choose “**Custom**” and click “**Next**”.



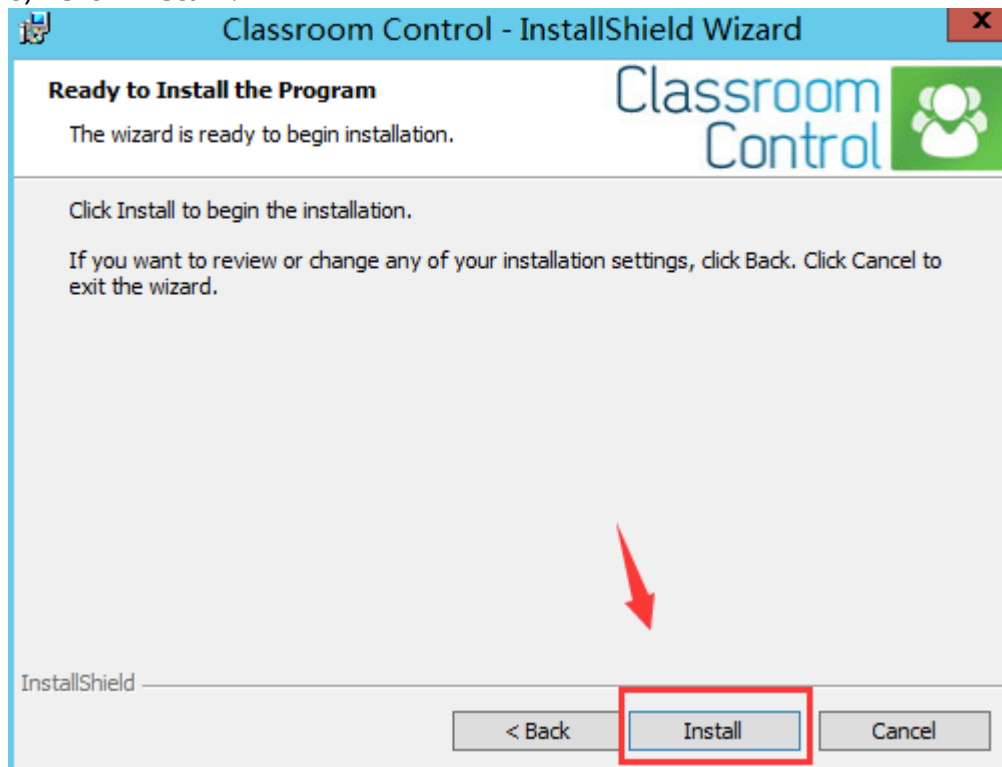
- 6) Check the “**Student**” and “**Tutor Console**”, change the installation path to be under the teacher account, e.g.: **C:\Users\Administrator\classroom control**, otherwise the students will be able to run the Tutor console, and then click “**Next**”.



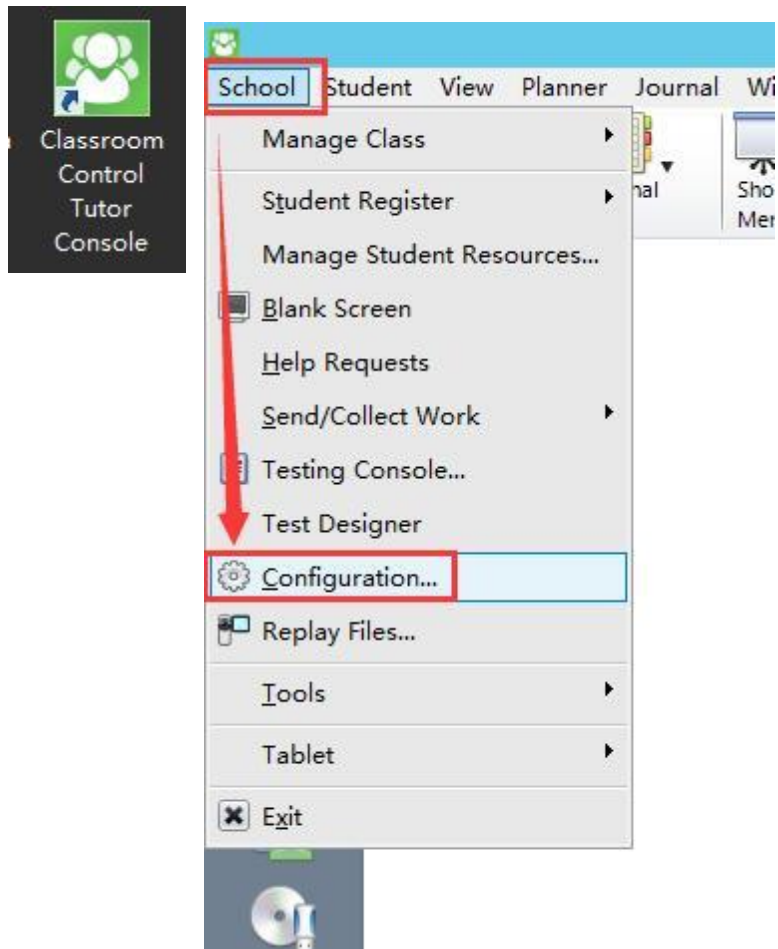
- 7) The default name of the room is **Eval** or you can also rename it and then click “**Next**”.



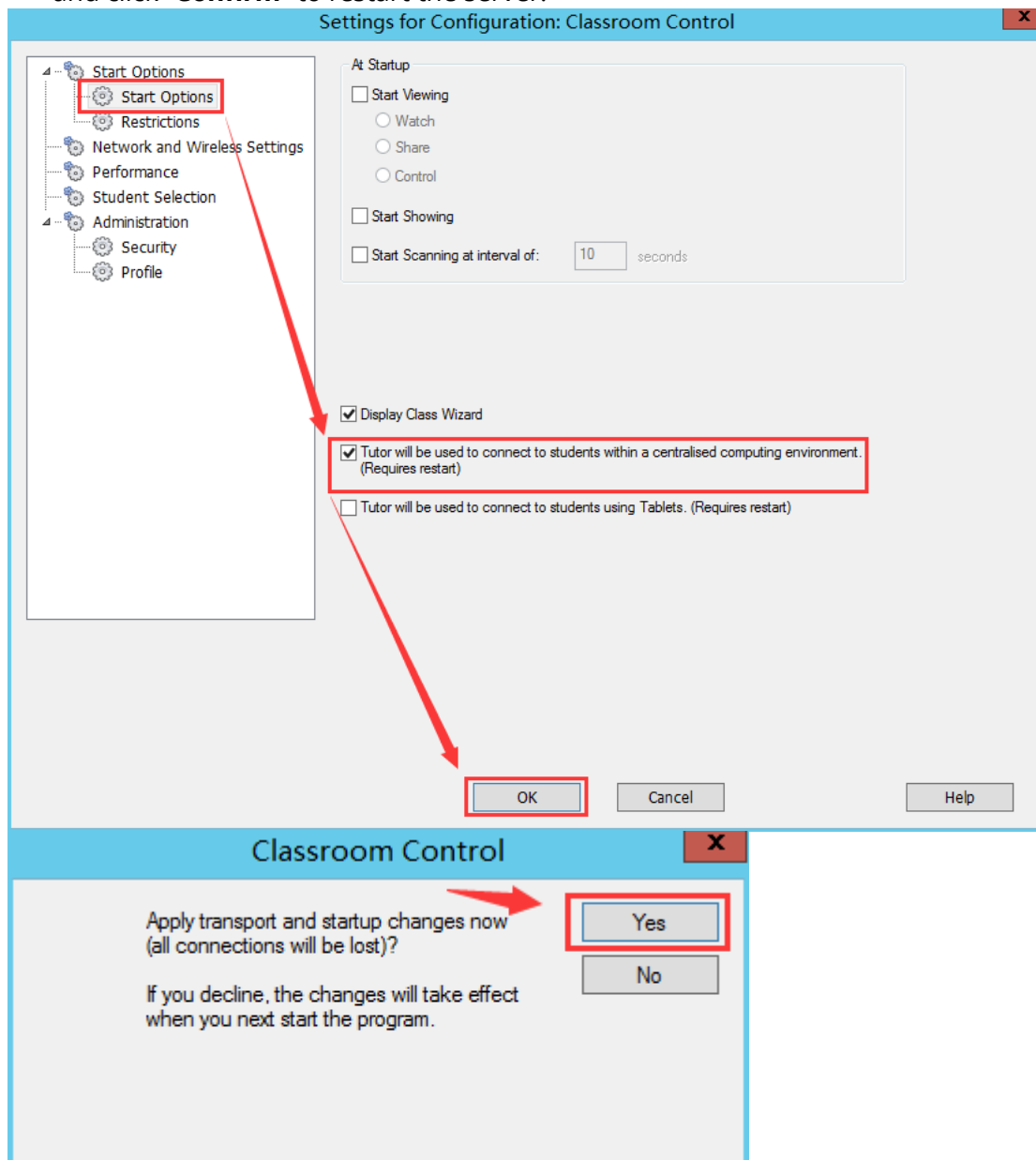
8) Click "Install".



9) After installation, please run the **Classroom Control Tutor Console** and select "Configuration...".



- 10) In the **Startup Options**, check the option **“Tutor will be used to connect to students within a centralised computing environment (Required restart)”** and click **“Confirm”** to restart the server.



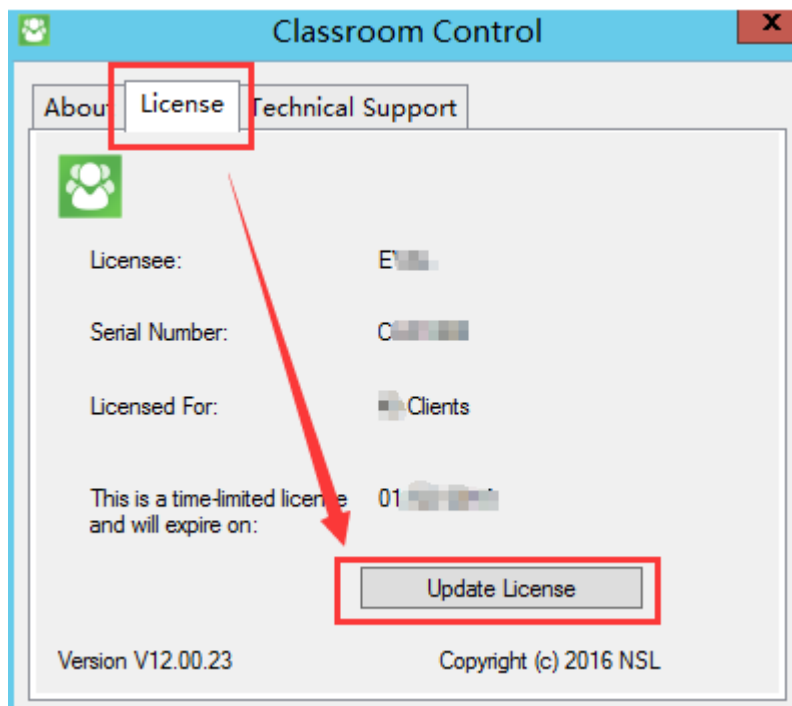
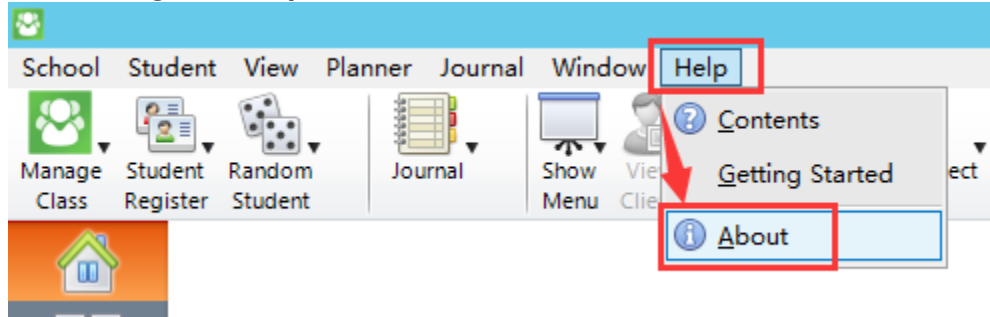
- 11) When installation completes, please restart the server.

.....

- 12) Teachers must use an **admin account** to run the Tutor Console of Classroom Control.

Authorization Code of vMatrix Classroom Control

If you choose the 30-day Trial, please fill in the authorization code after installation. You can open the **Classroom Control Tutor Console** and fill in the authorization code through the **Help** Menu.



Fill in the correct information:

- Serial Number
- Maximum Clients
- Expiry (dd-mm-yy). Generally, the authorization code is permanent effective, so it is unnecessary to fill in the period of validity.
- Licensee
- Authorization Code

The screenshot shows a dialog box titled "Classroom Control License Manager" with a red arrow pointing to the "General" tab. The dialog has four tabs: "General", "Advanced", "Defaults", and "Enforce". The "General" tab is active and contains the following fields:

- Serial Number:** A text input field containing "C1".
- Maximum Clients:** A text input field containing "1" and "(0 for unlimited)".
- Expiry Date:** A checkbox labeled "Expiry Date:" which is unchecked, followed by a date picker showing "1".
- Licensee:** A text input field containing "E".
- License type:** A dropdown menu showing "All platforms".
- Authorisation Key:** An empty text input field.

At the top left of the dialog, there is a small icon and the text "Enter the license information exactly as it appears on your License Certificate."